

selftrack

info@selftrack.co.za | www.selftrack.co.za

t: +27(0)12 460 1495 | 1498 | 7330 | f: +27(0)12 346 5177

VEHICLE TRACKING

TRACK ANYTHING, ANYTIME, ANYWHERE



MOBII

Vehicle Tracker

MOBI is an affordable real-time tracking terminal with GPS, GSM and Bluetooth connectivity, which is able to collect GPS satellite coordinates and other useful data and transfer them via a cellular network to the Selftrack server farm, from where users can monitor their vehicles in real-time on the Selftrack platform or Mobile APP. The MOBI is perfectly suitable for vehicle recovery, security, fleet management, car rental companies, taxi's, public transport, logistics companies, personal cars or any other battery-operated vehicle. Monthly subscription services include Selftrack's 24/7 **stolen vehicle recovery** service, real-time & history tracking, reports, tax logbook and automated alerts for speeding, unauthorised movement, battery tamper, crash, towing and geo-fencing. In addition, MOBI's 3-axis accelerometer offers harsh driving behaviour in respect of acceleration, braking and cornering. The internal emergency backup battery ensures continued operation even when the vehicle's battery is disconnected!

GSM & GPS Specifications

| | |
|-----------------|----------------------------|
| Quad-band | 900/1800 MHz; 850/1900 MHz |
| GPRS Multi-Slot | Class 12 (up to 240 kbps) |
| GPRS | Mobile Station Class B |
| SMS | Text/Data |

GNSS

| | |
|----------------------|--------------------------------------|
| Accuracy < 3m | Tracking: 33/99 acquisition channels |
| -165 dBm sensitivity | GPS, GLONASS, GALILEO, BEIDOU, SBAS, |
| Hot start < 1s | QZSS, DGPS, AGPS |
| Warm Start < 25s | NMEA-183 protocol |
| Cold start < 35s | |

Interfaces

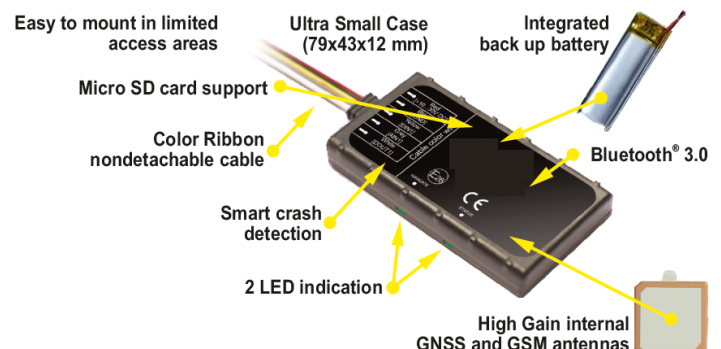
| | |
|--|---------------------------------|
| 1 Digital Input | Built in accelerometer |
| 1 Analog Input | Power supply 10 - 30V DC |
| 1 Digital Output (connecting external relays, LED, buzzers etc.) | Internal High Gain GNSS antenna |
| Bluetooth V3.0 | Internal High Gain GSM antenna |
| | 2 Status LEDs |

General Specifications

| | |
|------------------|---------------------------------|
| Dimensions | 79mm x 43mm x 12mm |
| Weight | 54g |
| Internal Battery | Rechargeable 170mAh Lithium-Ion |
| Rating | Max 250 mA r.m.s. max |
| Environment | Operating: -25°C to +55°C |
| | Storage: -40°C to +705°C |

Features & Advantages

- Bluetooth transceiver
- SD memory card
- IP54 certified case
- Fast first GPS fix
- Smart tracking algorithm
- Deep Sleep mode
- Ignition or any other I/O events
- Firmware & configuration update via GPRS / Bluetooth
- High Gain internal GNSS & GSM antennas
- GNSS & GSM 2 status LED
- Crash detection



CUSTOMER CARE: 0861 909 101 | RECOVERY: 0800 000 735

Block B, 1st Floor, Waterkloof Park, 469 Julius Jeppe St (cnr Dely Road), Waterkloof, Pretoria, Gauteng, South Africa